

U.S. Army Public Health Center

Army Influenza Activity Report

Week ending 14 December 2019 (week 50)

Influenza Vaccination Coverage*

As of 19 December 2019

N/A	DoD
86%	Army Active Duty
74%	Army Guard
71%	Army Reserve

*Data Source: MEDPROS, ASIMS, MRRS

SUMMARY

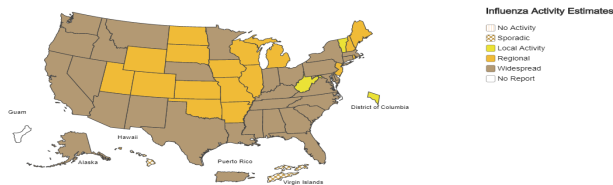
The most observed type of influenza in week 50 continues to be Influenza B. The percentage of tests that were Influenza B positive increased 40% from week 49 to week 50; the percentage of influenza A positive tests increased 31.2% during this period. Influenza A and B accounted for 45.3% and 54.6% respectively of positive laboratory tests submitted in week 50. Outpatient visits for influenza-like illness were 5.7% lower in week 50 than the previous week and 15.1% lower in week 50 of the current season compared to the same time last year. Two hospitalizations with onset dates in week 50 were reported in the Disease Reporting System Internet. Among non-Active Duty beneficiaries, beneficiaries under the age of 18 years old accounted for 78.2% of positive respiratory specimen results; while among Active Duty Soldiers, Soldiers between the ages of 18 to 29 years accounted for 47.8% of positive results. The next influenza report will be released on 3 January 2020.

GEOGRAPHIC SPREAD

FLUVIEW

A Weekly Influenza Surveillance Report Prepared by the Influenza Division
Weekly Influenza Activity Estimates Reported by State and Territorial Epidemiologists*

Week Ending Dec 14, 2019 - Week 50



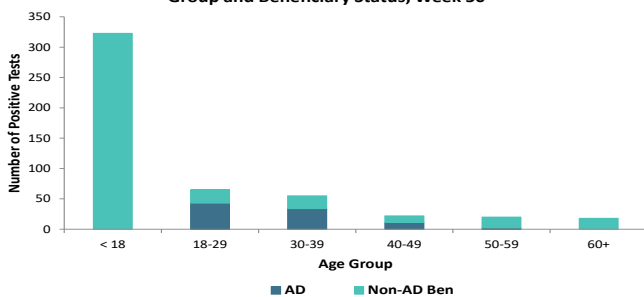
*This map indicates geographic spread and does not measure the severity of influenza activity.

CDC

During week 50 among the general U.S. population, widespread influenza activity was reported in Puerto Rico and 30 states; regional activity was reported in 17 states (Arkansas, Colorado, Illinois, Iowa, Kansas, Maine, Michigan, Missouri, New Hampshire, New Jersey, North Dakota, Oklahoma, Rhode Island, South Dakota, Utah, Wisconsin, and Wyoming); and local activity was reported in the District of Columbia and two states (Vermont and West Virginia). Sporadic activity was reported in the U.S. Virgin Islands and one state (Hawaii). Guam did not report.

DEMOGRAPHICS

Positive Respiratory Specimen Results from Army MTFs by Age Group and Beneficiary Status, Week 50

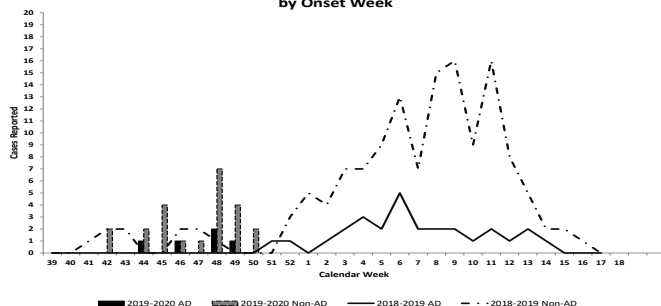


AD: A total of 90 positive respiratory tests were submitted for Active Duty (AD) Service Members in week 50; the majority of positive specimens were from Soldiers between 18 to 29 years of age (47.8%), followed by AD Service Members 30 to 39 years of age (37.7%).

Non-AD: A total of 413 positive respiratory specimens were collected from non-AD individuals; the majority of positive specimens came from beneficiaries under 18 years of age (78.2%).

INFLUENZA-ASSOCIATED HOSPITALIZATIONS

Army Influenza-Associated Hospitalizations Reported in DRSi by Onset Week



Two influenza-associated hospitalizations with onset dates within week 50 were reported to DRSi as of 19 December. To date, 28 influenza-associated hospitalizations have been reported since the start of the season. Among the 28 hospitalizations, 7 (25%) were from beneficiaries who were previously vaccinated; and 19 (67.8%) cases were positive for Influenza B. The average age of an individual hospitalized was 21 years. A higher number of hospitalizations were observed in week 50 of this influenza season as compared to the same week last season.

*DRSi does not capture cases older than 65 years old for influenza-associated hospitalizations.

Additional Resources: [APHC Influenza Reports](#), [Centers for Disease Control](#), [Disease Reporting System internet](#), [ESSENCE](#)

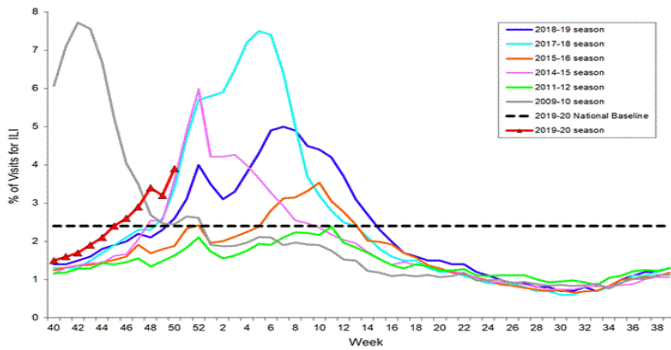
Key: ILI-Influenza-Like Illness; DRSi- Disease Reporting System Internet; ADV-Adenovirus; RSV-Respiratory Syncytial Virus; SM-Service Member; MEDPROS- Medical Protection System; ASIMS- Aeromedical Services Information Management System; MRRS- Medical Readiness Reporting System

Questions?

[Email APHC](#)

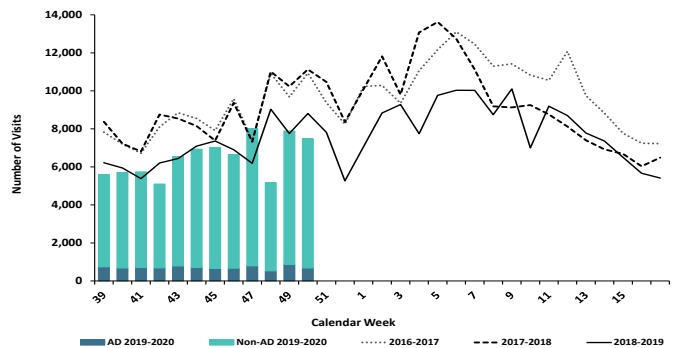
ILI ACTIVITY - UNITED STATES

Percentage of Visits for Influenza-like Illness (ILI) Reported by the U.S. Outpatient Influenza-like Illness Surveillance Network (ILINet), Weekly National Summary, 2019-2020 and Selected Previous Seasons



ILI ACTIVITY - ARMY

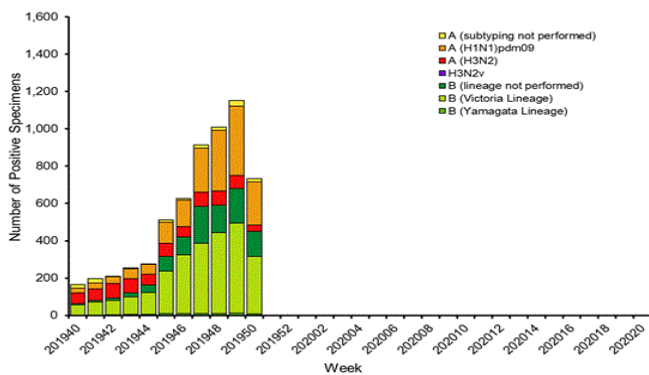
ESSENCE Weekly Outpatient Clinic Visits for Influenza-like Illness Army MTFs, All Services, 2016-2019



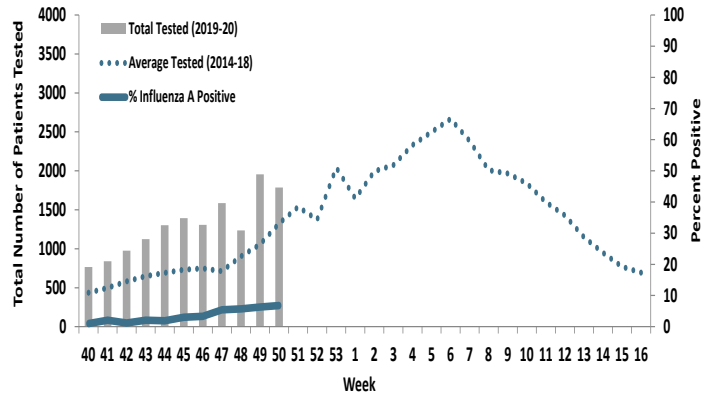
Nationwide in week 50, 3.9% of outpatients visits were attributable to ILI; this rate is above the national baseline (2%). The percentage of ILI visits reported nationwide each week so far this season has been consistently higher than in previous recent seasons. At Army medical treatment facilities, incident ILI activity decreased from week 49 to week 50 by 5.1%. ILI activity was 15.1% lower in week 50 this season compared to the same week last season.

LABORATORY RESPIRATORY SPECIMEN TESTING

Influenza Positive Tests Reported to CDC by U.S. Public Health Laboratories, National Summary, 2019-2020 Season



Proportion of Positive Influenza A Specimens for U.S. Army 2019-2020



Nationwide, 1,413 specimens were submitted to CDC during the current influenza season; 51.8% of the specimen were positive. Influenza A accounted for 38.5% of the total positive specimens submitted to the CDC in week 50. In the Army population, 4.6% of 3,731 specimens were positive for influenza A, an increase of 40% from the previous week. So far this season, the total number of individuals tested each week has exceed the average number tested in previous seasons. In the Army population, Influenza A accounted for 34.5% of the total positive tests submitted to the Army Public Health Center in week 50.

		Week 47	Week 48	Week 49	Week 50	Season Total
Test Types Among Positive Influenza A Specimens	RAT	28	24	43	57	243
	Culture	1	4	5	3	24
	PCR	57	43	76	114	360
Army MTF Laboratory Results, 2019-20	Influenza A	86	71	124	174	657
	Influenza B	153	145	160	210	1125
	Adenovirus	11	6	10	5	98
	Enterovirus	0	0	0	0	6
	Parainfluenza	15	5	10	4	140
	RSV	66	69	101	110	609
	Negative	3265	2458	3815	3228	29542
Total	3596	2754	4220	3731	32177	

Of the 3,731 respiratory labs tested submitted in week 50, 503 (13.4%) were positive for any type of respiratory illness. Influenza B accounted for 41.7% (n=210) of all positive lab results in week 50, followed by Influenza A (n=174, 34.5%) and RSV (21.8%). There was a 28.7% increase in the number of positive Influenza A tests from week 49 to week 50, compared to a 23.8% increase in the number of positive Influenza B tests.

Respiratory PCR tests accounted for 65.5% of the positive influenza A tests performed, followed by rapid antigen tests (32.7%) and cultures (1.7%).

Locations providing week 50 laboratory data as of 17 December 2019: Ft. Belvoir, Ft Benning, Ft Bliss, Ft Bragg, Ft Carson, Ft Drum, Ft Gordon, Ft Hood, Ft Huachuca, Ft Irwin, Ft Jackson, Ft Knox, Ft Leavenworth, Ft Lee, Ft Leonard Wood, Ft Meade, Ft Polk, Ft Riley, Ft Rucker, Ft Sam Houston, Ft Stewart, Ft. Wainwright, Korea, Landstuhl, Redstone Arsenal, Tripler, West Point, and Walter Reed.

*NOTE: Madigan AMC data is also received weekly, but cannot be included at this time due to reporting limitations from MHS Genesis.

LABORATORY RESPIRATORY SPECIMEN TESTING

Region	Installation	Influenza A			Influenza B			Adenovirus		
		No. Tested	% Positive	Baseline % Positive	No. Tested	% Positive	Baseline % Positive	No. Tested	% Positive	Baseline % Positive
PHCA	Ft. Belvoir	76	3.9	6.1	14	100	0			7.7
	Ft. Benning	163	6.7	14.9	163	11.7	1.7			
	Ft. Bragg	77	1.3	7.2			100			
	Ft. Campbell			11.4			0			100
	Ft. Drum	14	0	0	1	100				100
	Ft. Eustis			6.3			100			
	Ft. Gordon	89	2.2	3.4	89	13.5	2.3			100
	Ft. Jackson	86	4.7	0	86	15.1	0			
	Ft. Knox	5	20	11.8	5	20	0			
	Ft. Lee	34	2.9	0	9	100	100			
	Ft. Meade	13	15.4	0						
	Ft. Rucker	23	0	0	23	30.4	0			
	Ft. Stewart	73	2.7	17.2	73	20.5	0			
	Redstone Arsenal	7	0	25	7	0	0			
West Point Military Academy	15	33.3	27.3	4	25	0			100	
PHCC	Ft. Bliss	254	4.7	6.1	241	12.4	0			13.8
	Ft. Carson	110	0.9	10.8						
	Ft. Hood	166	4.8	0.7	164	6.1	0	1	0	4.3
	Ft. Huachuca	11	0	0	11	9.1	0			
	Ft. Irwin	3	0	7.7	3	33.3	0			
	Ft. Leavenworth	31	19.4	0	31	3.2	0			
	Ft. Leonard Wood	52	1.9	0	52	3.8	0			100
	Ft. Polk	28	7.1	3.7	7	100	25			
	Ft. Riley	66	1.5	9.5	66	7.6	0			
	Ft. Sam Houston	445	21.3	2	395	13.4	1.6			100
Ft. Sill	50	4	5	2	100					
PHCE	Landstuhl Regional Medical Center	17	0	2.8	17	11.8	0	17	0	3.1
PHCP	Ft. Wainwright	44	4.5	6.3	44	6.8	0			
	Korea	45	6.7	22.4	40	0	0	40	12.5	2.2
	Tripler Army Medical Center	81	11.1	4.5	60	1.7	0	9	0	0
Region	Installation	Enterovirus			Parainfluenza			RSV		
		No. Tested	% Positive	Baseline % Pos.	No. Tested	% Positive	Baseline % Pos.	No. Tested	% Positive	Baseline % Pos.
PHCA	Ft. Belvoir							20	35	21.4
	Ft. Campbell						100			100
	Ft. Drum						100	1	0	50
	Ft. Gordon						100			100
	Ft. Sam Houston						100			100
	Ft. Stewart						100	19	36.8	33.3
	West Point Military Academy									100
PHCC	Ft. Bliss							238	23.5	16.9
	Ft. Carson							16	12.5	5.9
	Ft. Hood						4.2	50	20	32.4
	Ft. Leavenworth							7	0	68.4
	Ft. Leonard Wood						100			
	Ft. Polk							4	25	33.3
	Ft. Riley							35	28.6	17.9
Ft. Sill							9	55.6	50	
PHCE	Landstuhl Regional Medical Center				19	15.8	7.1	22	13.6	10.3
PHCP	Ft. Wainwright							43	0	39.6
	Korea			0	40	2.5	4.5	41	22	14.9
	Tripler Army Medical Center	9	0	0	9	0	0			100

No.: Number of specimens tested during MMWR week 50 2019.

% Pos.: Percentage of positive specimens reported during MMWR week 50 2019.

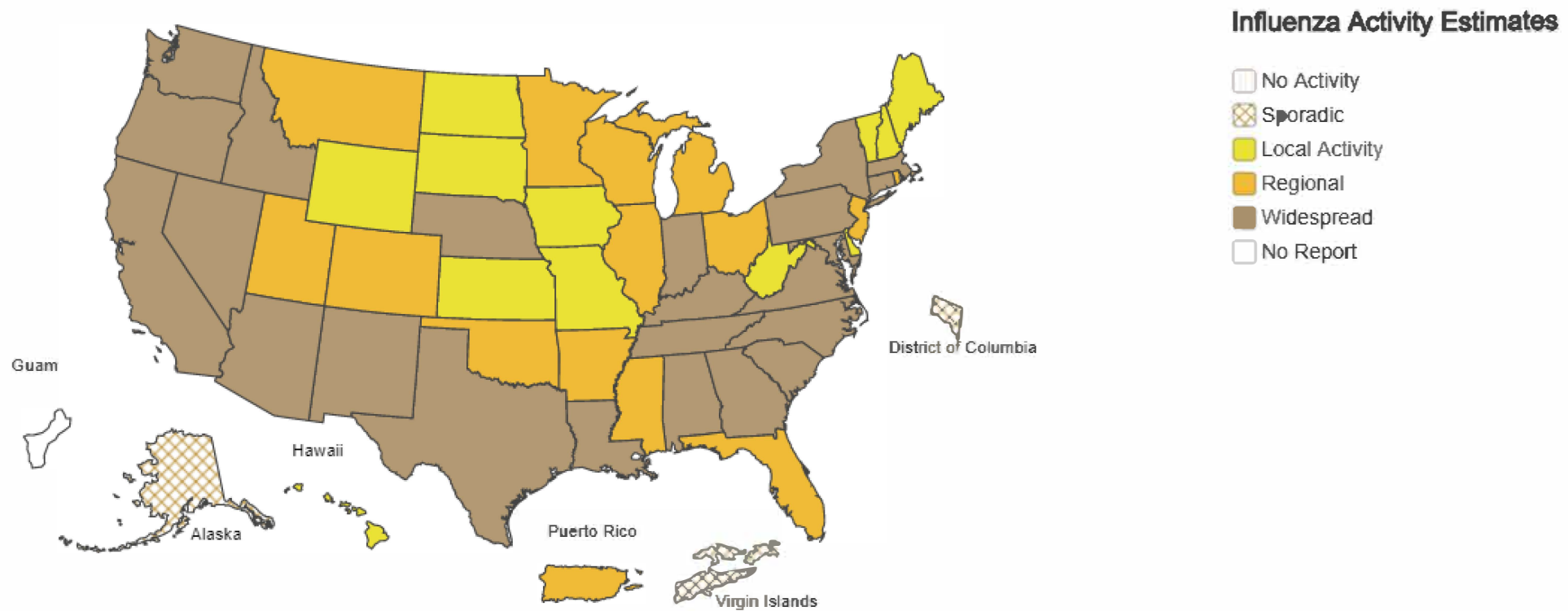
Baseline % Pos.: Percentage of positive specimens reported in MMWR week 50 during influenza seasons from September 2012 - May 2019.

Missing values indicate that specimens were not tested for the disease during the week of interest.

A Weekly Influenza Surveillance Report Prepared by the Influenza Division

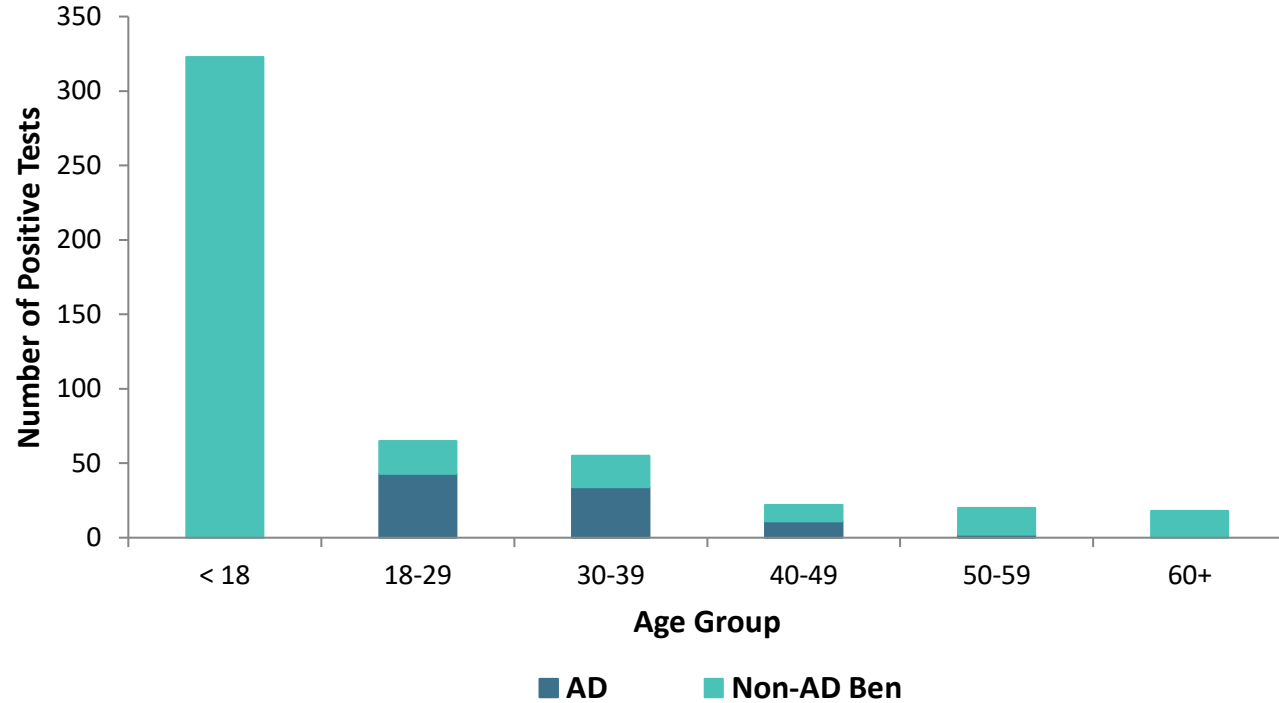
Weekly Influenza Activity Estimates Reported by State and Territorial Epidemiologists*

Week Ending Dec 07, 2019 - Week 49



*This map indicates geographic spread and does not measure the severity of influenza activity.

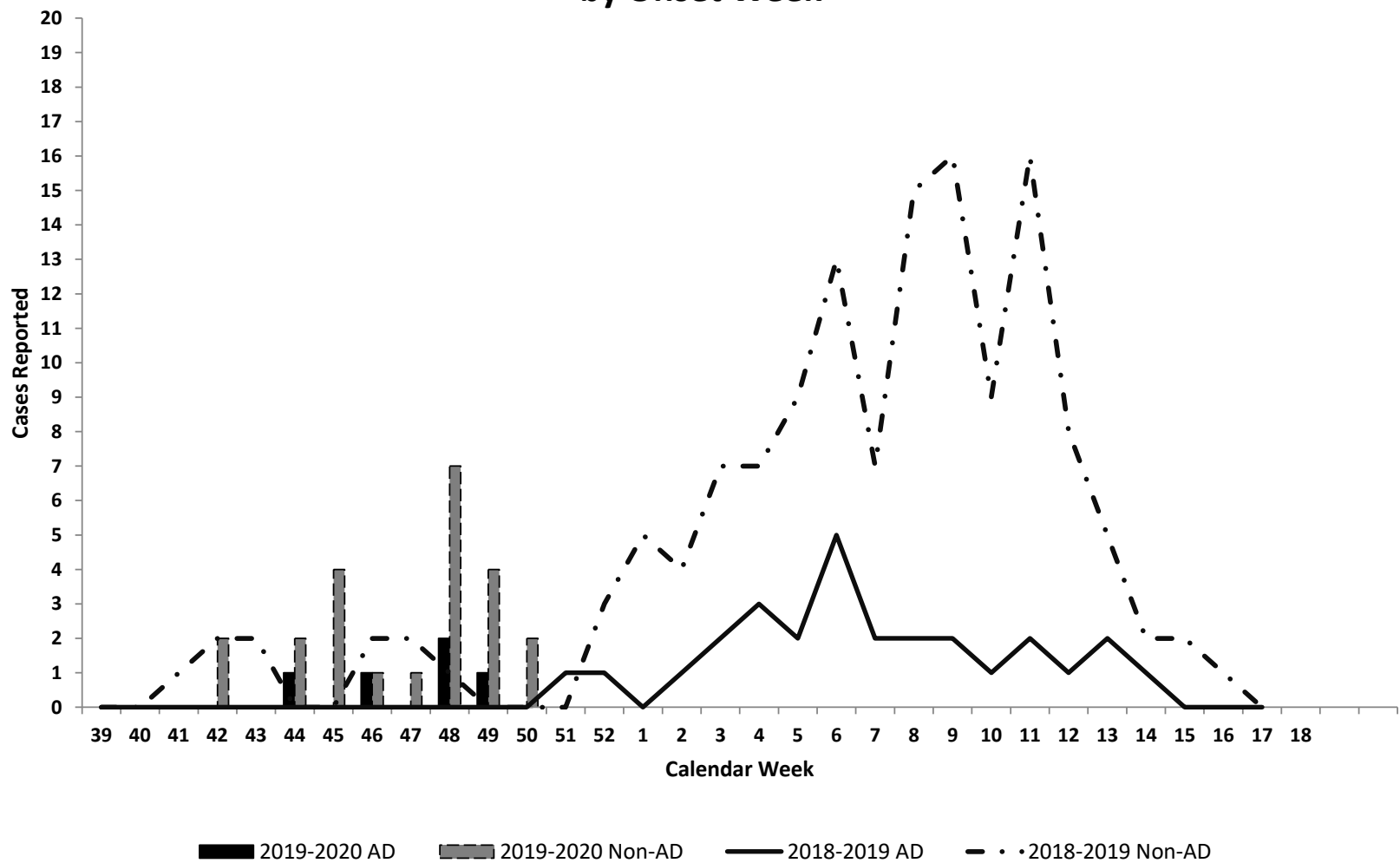
Positive Respiratory Specimen Results from Army MTFs by Age Group and Beneficiary Status, Week 50



Week 50			
Age Group	AD	Non-AD Ben	Season Total
< 18	0	323	1826
18-29	43	22	354
30-39	34	21	203
40-49	11	11	78
50-59	2	18	75
60+	0	18	69
Total	90	413	2605



Army Influenza-Associated Hospitalizations Reported in DRSi by Onset Week

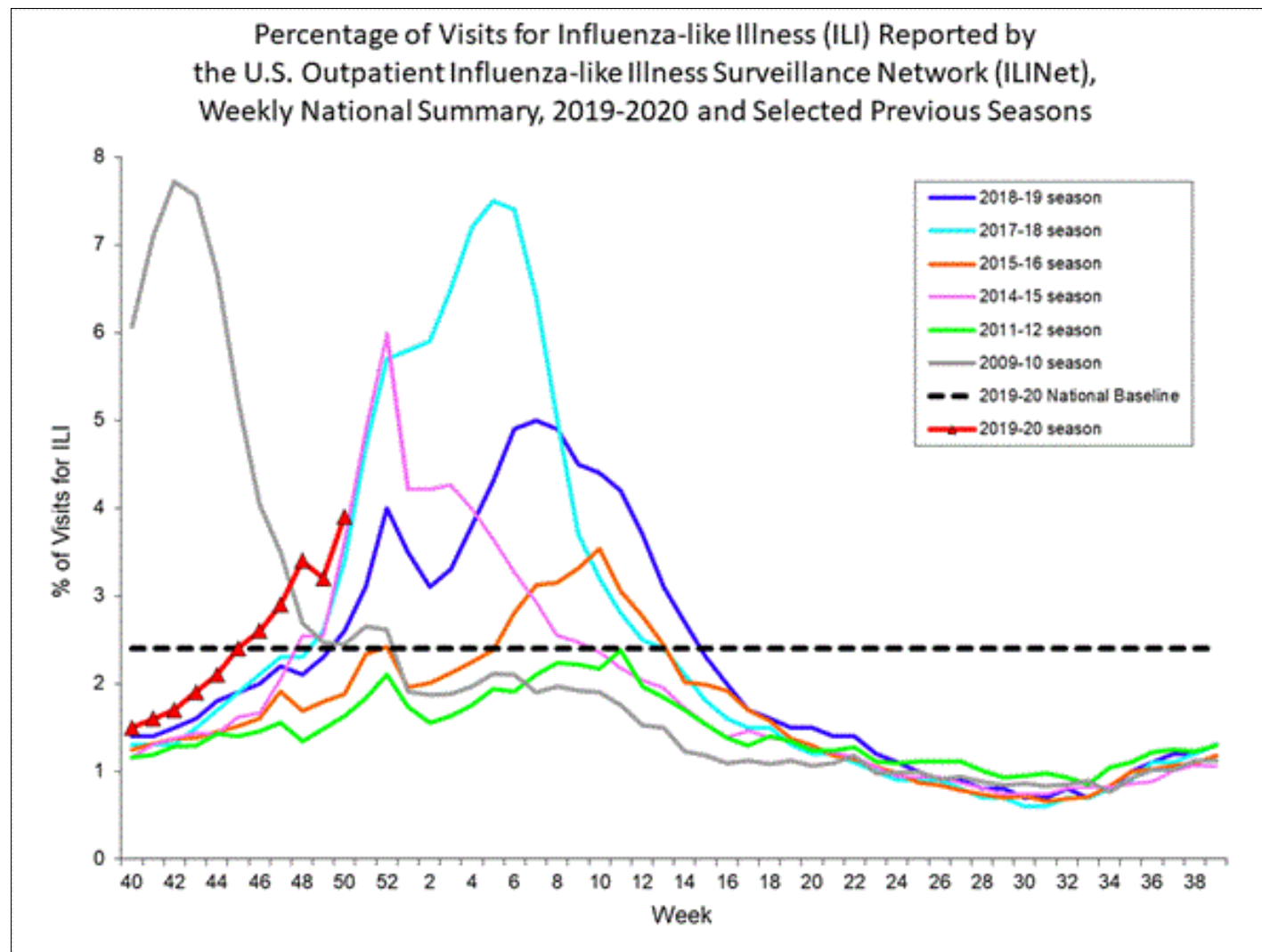


Note: Reportable influenza cases are defined as only cases that have been hospitalized and are under the age of 65. See [Armed Forces Reportable Medical Events Guidelines and Case Definitions](#) for more information.
Data as of 12 December 2019.

FLUVIEW

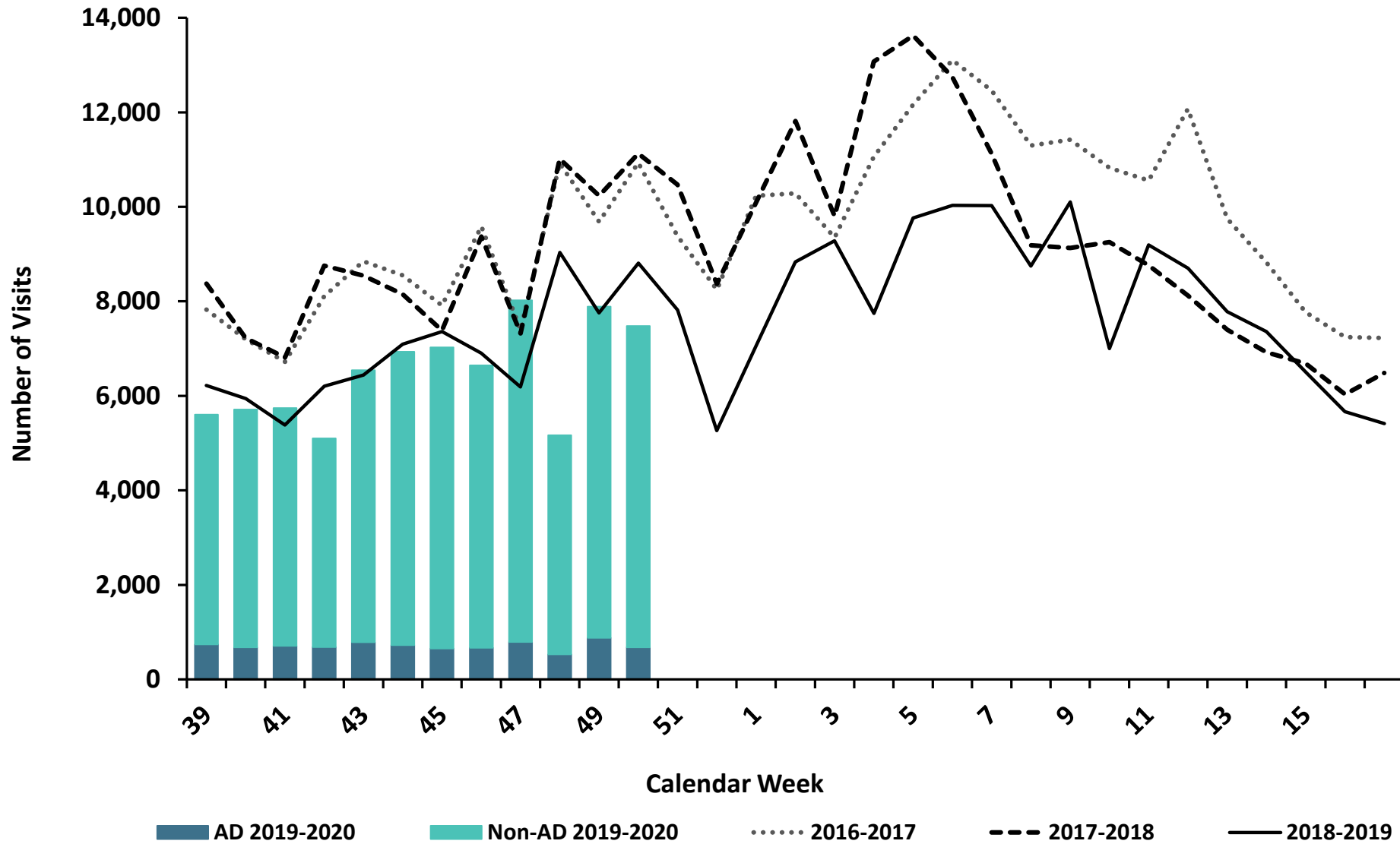


A Weekly Influenza Surveillance Report Prepared by the Influenza Division



ESSENCE Weekly Outpatient Clinic Visits for Influenza-like Illness

Army MTFs, All Services, 2016-2019

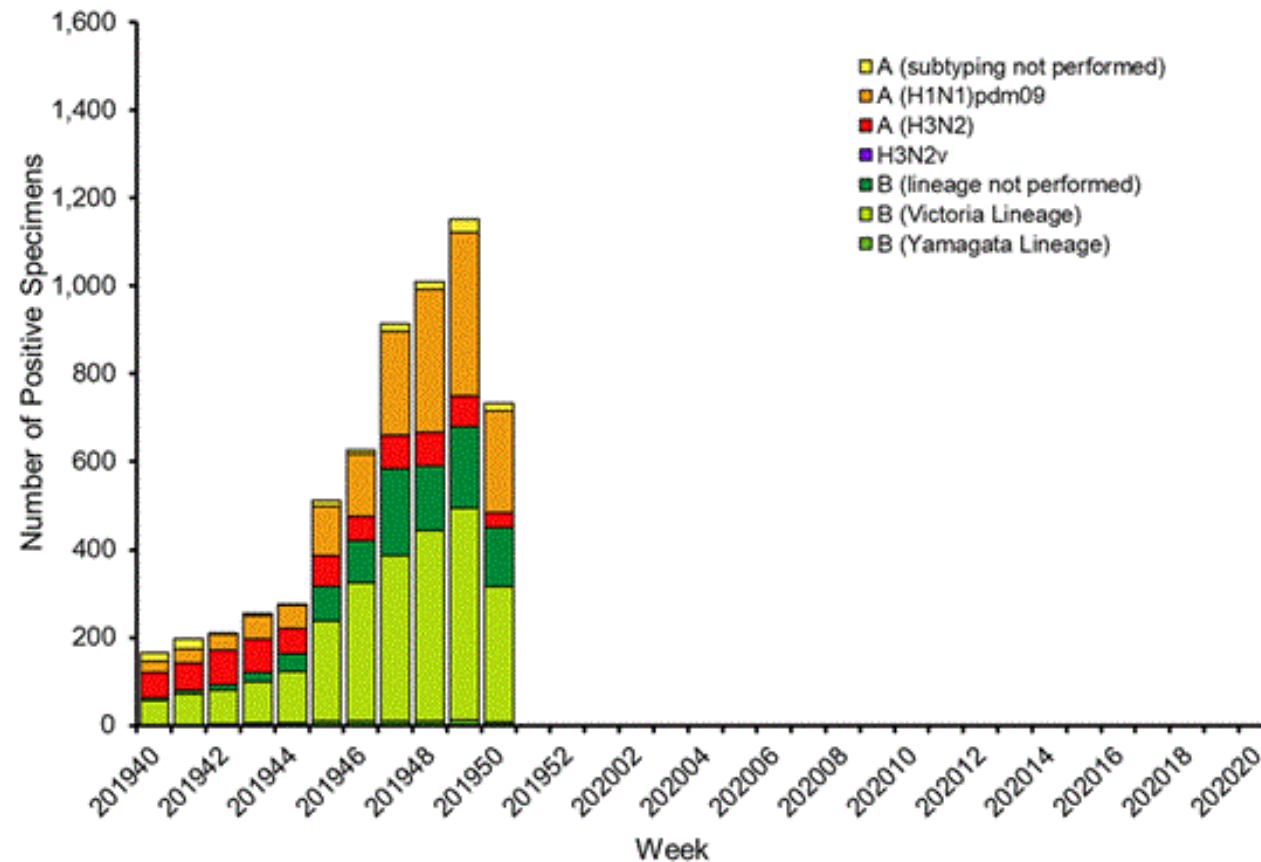


FLUVIEW

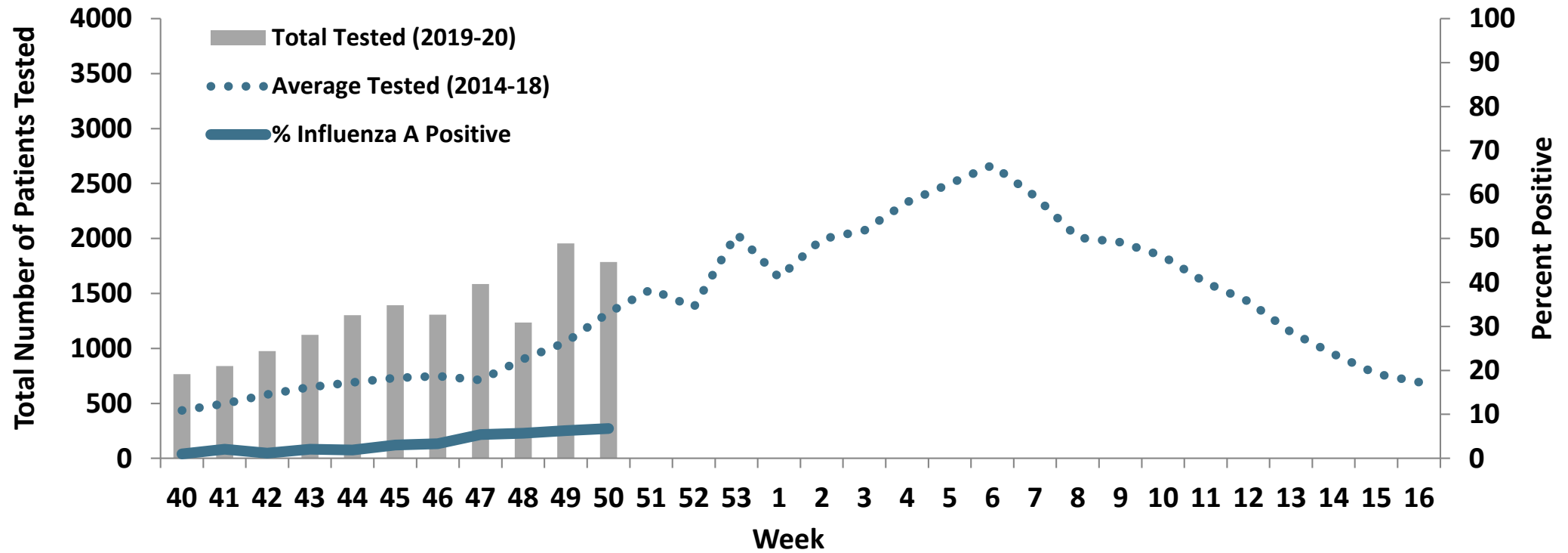


A Weekly Influenza Surveillance Report Prepared by the Influenza Division

Influenza Positive Tests Reported to CDC by U.S. Public Health Laboratories, National Summary, 2019-2020 Season



Proportion of Positive Influenza A Specimens for U.S. Army 2019-2020



Laboratory Respiratory Specimen Testing – Weeks 46 – 49

		Week 47	Week 48	Week 49	Week 50	Season Total
Test Types Among Positive Influenza A Specimens	RAT	28	24	43	57	243
	Culture	1	4	5	3	24
	PCR	57	43	76	114	360
Army MTF Laboratory Results, 2019-20	Influenza A	86	71	124	174	657
	Influenza B	153	145	160	210	1125
	Adenovirus	11	6	10	5	98
	Enterovirus	0	0	0	0	6
	Parainfluenza	15	5	10	4	140
	RSV	66	69	101	110	609
	Negative	3265	2458	3815	3228	29542
	Total	3596	2754	4220	3731	32177

